



DROP CITY



TOOLS AND ARTIFACTS  
THAT PROMOTE GREATER  
AUTONOMY AND DECENT-  
RALIZATION

BETTER AND SMALLER  
COMMUNICATION DEVICES

ALTERNATIVE ENERGY  
SOURCES

AUTODIAGNOSTIC MEDICAL  
TOOLS

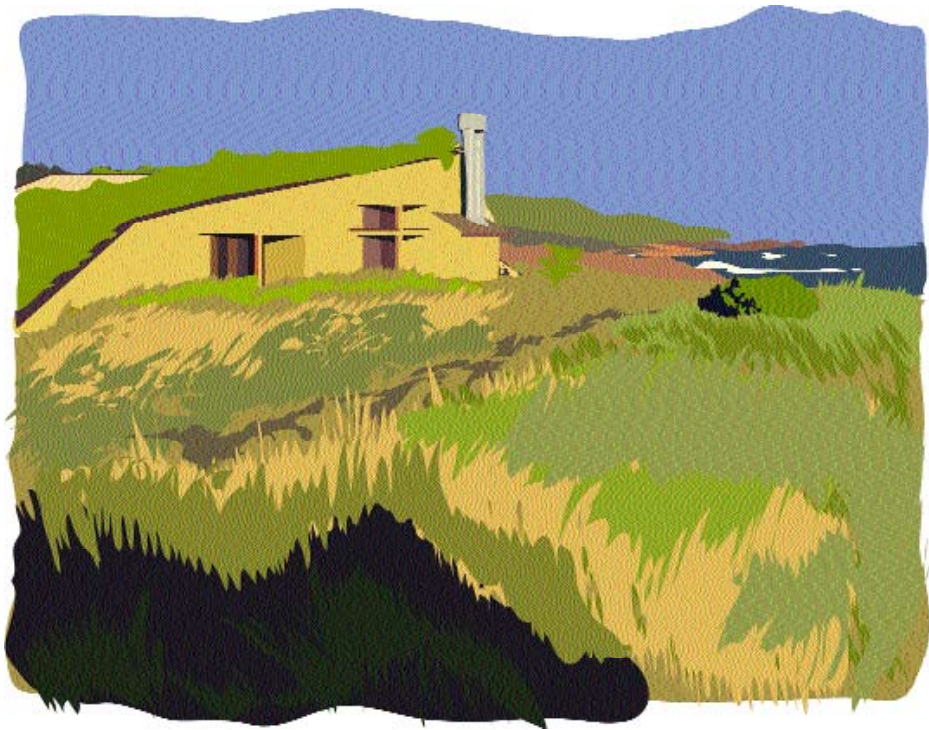
MONORAIL SYSTEMS

ULTRACOMPACT ELEC-  
TRIC OR ALTERNATIVELY  
POWERED CARS

PERSONAL, BATTERY-  
DRIVEN MOBILITY DEVIC-  
ES, WHICH CAN EASILY BE  
HAND CARRIED

HIGH-QUALITY HOME APPLI-  
ANCES ,LOW IN ENERGY  
USE, EASY TO REPAIR

MASS-PRODUCED MULTI-  
PLE-USE BUILDINGS



A BEER CAN, OR BOT-  
TLE, COSTS FIVE TIMES  
AS MUCH AS THE BEER IT  
HOLDS.

A POTATO CHIP BAG,  
TABLE SYRUP BOTTLE,  
CHEWING GUM WRAPPER OR  
SOFT DRINK BOTTLE COST  
TWICE AS MUCH AS THE  
FOODS THEY CONTAIN.

A BREAKFAST CEREAL  
PACKAGE, SOUP CAN, FRO-  
ZEN FOOD BOX, BABY  
FOOD JAR, OR DESSERT  
BOX COSTS ONE-AND-A-  
HALF TIMES AS MUCH AS  
THE FOODS INSIDE.

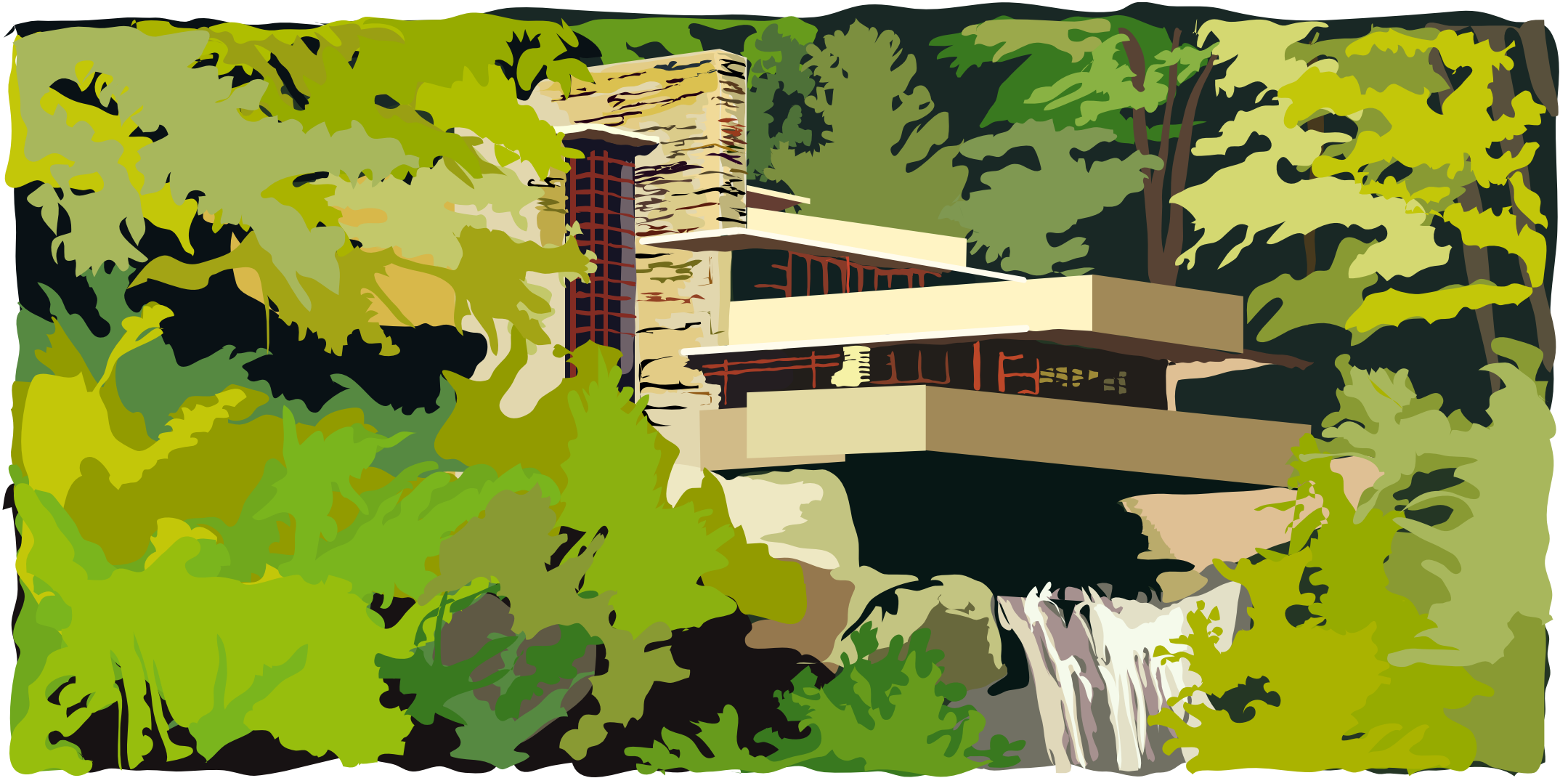
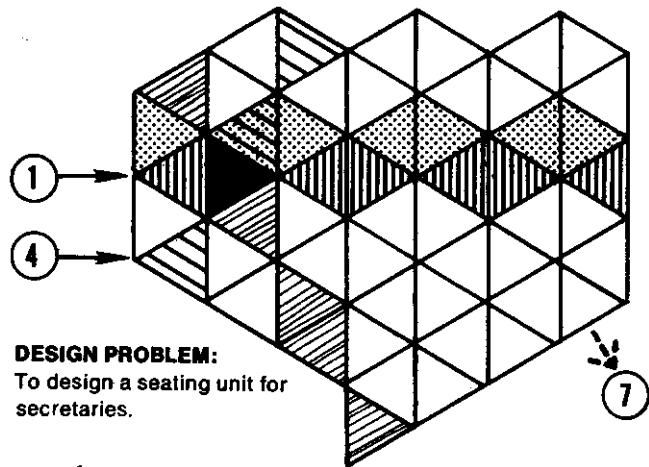


Figure E

Schematic representation of the behavior of a multi-disciplinary team. Only a small section of the hexagonal net is shown.



**DESIGN PROBLEM:**  
To design a seating unit for secretaries.



Designer's cyclic path (triangles a, b, c, d, e, etc.) if uninterrupted by other disciplines.



Doctor's cyclic path (triangles u, v, w, x, y, z): the treatment of work-induced diseases.



Sociologist's cyclic path (triangles p, q, r, s): work habits and attitudes of secretaries in offices.



"Client" group's cyclic path (triangles g, h, i, j, k): in this case, office secretaries, doing their work.



Intersection of various disciplines' paths.



Cyclic paths of other groups not concerned in this particular problem.

- 1: Entry point of designer.
- 4: Interface between sociologist's path (near point of his emergence) and consultation with some other discipline, say, engineering.
- 7: One of many possible, unpredictable emergence points by the team.



MODULAR COMPONENT  
FOR MASS HOUSING  
INFORMED BY  
VERNACULAR STYLES OF  
THE REGION

AUTOMATED TRAFFIC

HIGH-SPEED RAIL NET-  
WORKS

COMPUTERIZED MEDICAL  
DIAGNOSTIC DEVICES

TELEVISION-PHONES

EDUCATION AIDED  
THROUGH TELEVISION AND  
TEACHING MACHINES

DEPOLLUTED MANUFAC-  
TURING SYSTEMS

WIDE USE OF BIO-DEGRADA-  
BLE MATERIALS

